



DT340 L
PIPE RANGE 8"

- STATIC ZOOM CAMERA +
- LED LIGHTS +
- 200M (656FT) TETHER & REEL +
- HANDHELD CONTROLLER +
- 2 CARRYING CASES +



DT340 S
PIPE RANGE 8"-12"

- PTZ CAMERA +
- DISTANCE COUNTER +
- LED LIGHTS
- 200M (656FT) TETHER & REEL
- HANDHELD CONTROLLER
- 2 CARRYING CASES



DT340 X
PIPE RANGE 8"-36"

- DT340S PACKAGE +
- MODULAR ELEVATING ARM +
- 12" WHEELS +
- 400M (1300FT) TETHER & REEL +
- AUX LIGHTS +

DT340 // CAMERA



- COLOR 1/4" CCD
- 700HD TVL, 1.0 LUX
- 10X OPTICAL, 12X DIGITAL
- AUTO SHUTTER, AUTO/MANUAL FOCUS
- LIGHTS: DIMMABLE
- SHADOWLESS LED FLOOD
- PAN TILT ZOOM
- TILT 280°
- PAN INFINITE (CONTINUOUS)

DT340XL // FULLY LOADED



- DT340X PACKAGE +
- CRAWLER TRACKS
- 8 & 10" CARBIDE WHEELS
- REAR-FACING CAMERA
- WHEEL SPACERS
- CONTROL CONSOLE
- POWER REEL
- LIFTING KIT
- DVR
- SONDE

CUSTOMBUILD // DT340 ADD-ONS



VIDEO GLASSES



DIGITAL VIDEO RECORDER



LIFTING KIT



CRAWLER TRACKS



SONDE



RUBBER WHEELS
10-12"



CARBIDE WHEELS
8-10"



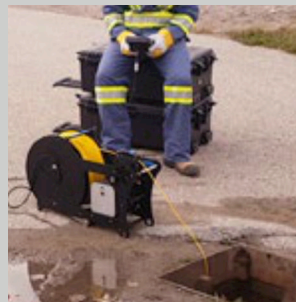
ELEVATING ARM



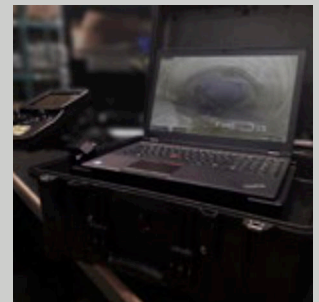
GIS SOFTWARE



REAR-FACING CAMERA



POWERED REEL



CONTROL CONSOLE

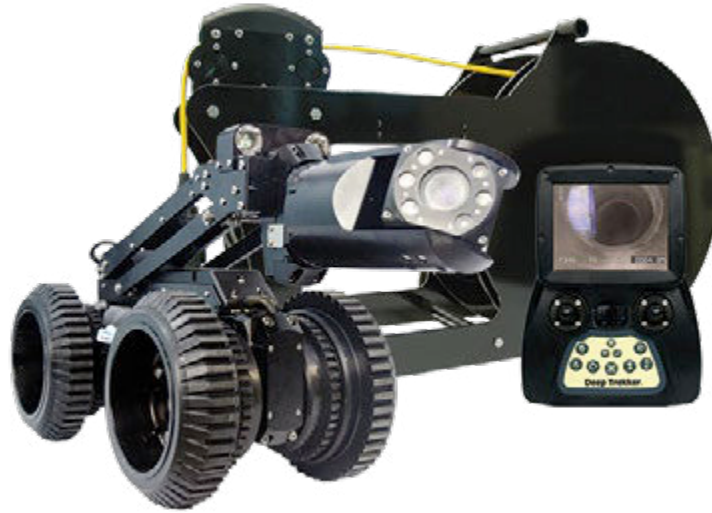




DT340

FEATURES

KEY HIGHLIGHTS



RANGE - 1,312FT



SUBMERSIBLE - 124FT



FULL DAY OPERATION



LOW MAINTENANCE



TWO CARRYING CASES



STEERABLE



GIS SOFTWARE // PACP/NASSCO
COMPLIANT REPORTING COMPATIBLE

DT340 // SPECIFICATIONS

DT340 'S' CRAWLER GENERAL SPECIFICATIONS:

LENGTH:	710 MM (27.95")
WIDTH:	141 MM (5.55")
HEIGHT:	151 MM (5.96")
WEIGHT:	16.6 KG (36.59 LB)
MATERIALS:	STAINLESS STEEL ALUMINIUM HIGH STRENGTH SAPPHIRE
DEPTH RATING:	50 M (164 FT)
VIEWING CAPABILITY:	PIPELINES 200MM (8") DIAMETER TO
900MM (36") CENTER	
WHEELS:	4
TRACKS:	OPTIONAL
WHEEL SIZES:	200 MM DIAMETER (8")(STANDARD) 250 MM DIAMETER (10")(OPTIONAL) 300 MM DIAMETER (12")(OPTIONAL)
TURN RADIUS:	0 MM (0")
SPEED:	12 M /MIN
OPERATING TEMP:	-5C TO 40C (23F - 104F)
WARRANTY:	1 YEAR -PARTS AND LABOR
ELECTRICAL SYSTEM :	
SYSTEM:	19.2 VDC (LITHIUM BATTERIES)
BATTERY RUN TIME:	4 - 8 HOURS
BATTERY RECHARGE:	1.5 HOURS
SENSORS:	INCLINE, ROLL, LEAK, CAMERA PAN/TILT

DRIVE SYSTEM :

POWER:	PLANETARY GEAR MOTOR (2 PIECES)
WHEEL CONTROL:	STEERABLE, CRUISE CONTROL, INFINITELY VARIABLE (FORWARD & REVERSE)
GEAR TRAIN:	HIGH STRENGTH OVERSIZED GEARS
FINAL DRIVES:	MAGNETICALLY COUPLED

TETHER :

TETHER DIAMETER:	6.2 MM (0.24")
TETHER LENGTH:	200 M - 400 M (164 FT - 1,312 FT)
TETHER CONSTRUCTION:	POLYURETHANE OUTER JACKET WITH EMBEDDED SYNTHETIC FIBERS

MINIMUM BREAKING STRENGTH:

450 KG (1000 LB)

TETHER REEL :

CONSTRUCTION:	INDUSTRIAL TOUGH; IP68
INTELLIGENCE:	STANDALONE HALL EFFECT TETHER LENGTH COUNTER (OPTIONAL)
CAPACITY:	400M (1,312 FT)
OPERATION:	MANUAL COIL // ACTIVE FREE-WHEEL FREE-WHEEL UNCOIL WITH GUIDE // POWERED REEL